

# HOTCHKIS HOTCHKIS SPORT SUSPENSION

## 2268 FRONT AND REAR SPORT SWAY BAR SET 59-64 CHEVROLET B-BODY



Thank you for your purchase from our line of classic Chevrolet B-body suspension parts. Please call us at (877) 4NO-ROLL if you have any questions regarding your Hotchkis Performance products. Visit us online # [www.hotchkis.net](http://www.hotchkis.net)

- ✓ This installation will require drilling new mounting holes in the frame for both the front and rear sway bars. Please read instructions carefully to avoid unnecessary drilling.
- ✓ You will have to remove the pitman arm to install this sway bar!

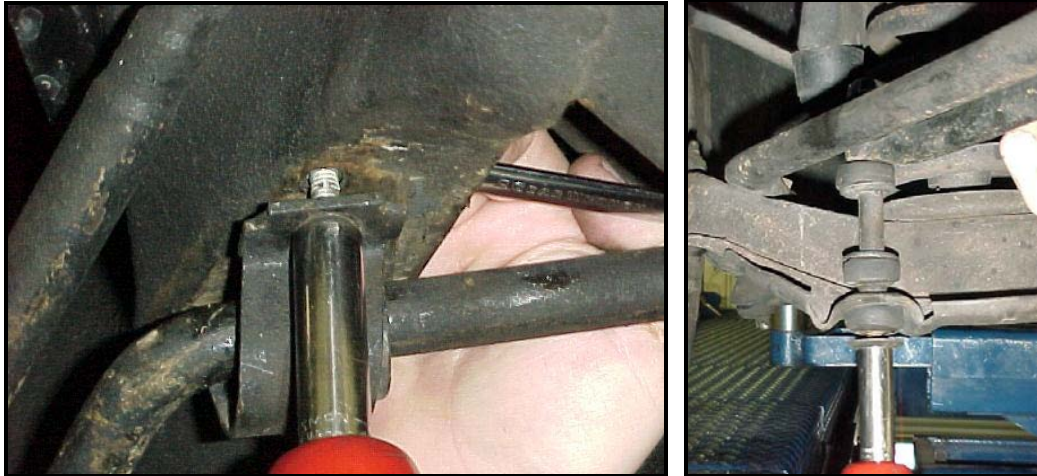
### INSTALLATION OF HOTCHKIS PERFORMANCE FRONT SWAY BAR

- 1) Securely block the rear wheels of the vehicle and raise the vehicle with a jack. Support the vehicle on jack stands. The wheels of the car should be turned straight for ease of installation. Some vehicles do not have a stock front sway bar, so step 2 can be ignored. This installation will also require a pitman arm puller. Use the photos below for reference.

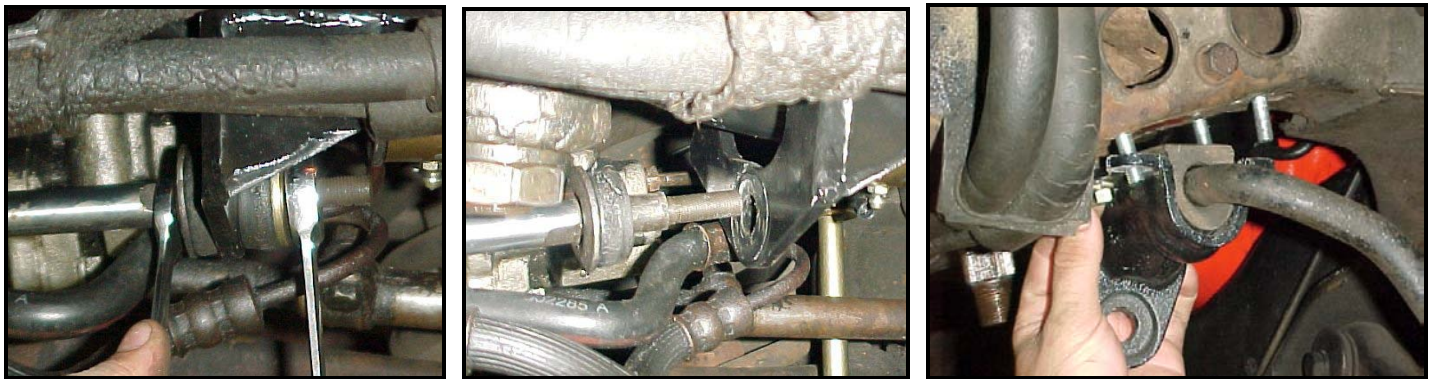


*The car shown above has power steering and a sway bar factory installed. Owners of cars without a factory sway bar should note the position of the brackets and end link mounts, as you will be adding all of these at a later time.*

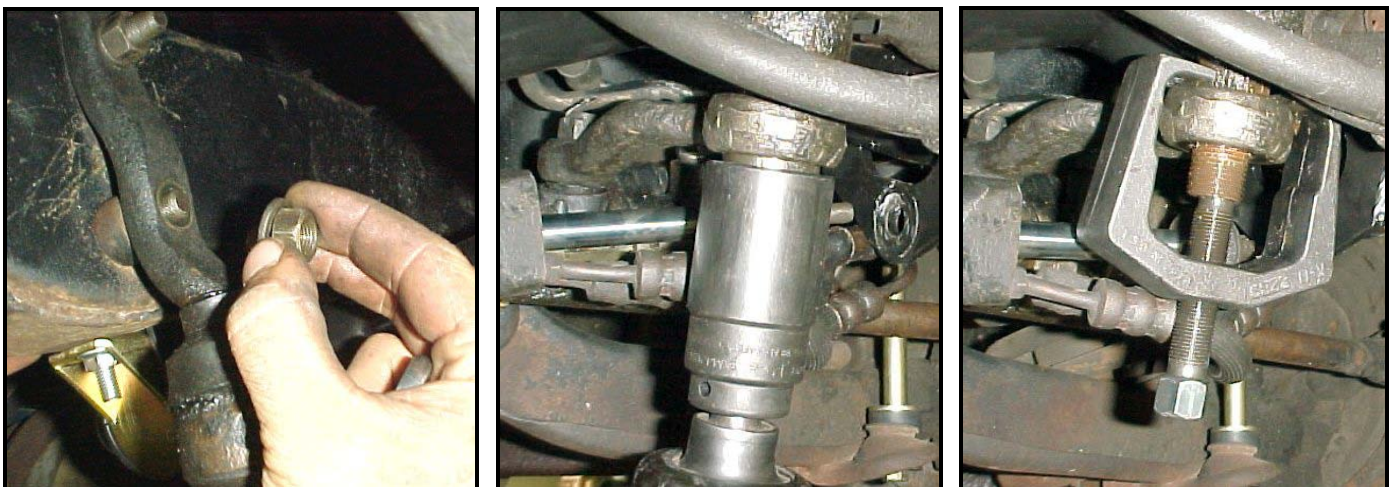
- 2) Unbolt the stock sway bar bushing brackets. Remove the bushings once the brackets are loose. Unbolt and remove the end links from each end of the bar. The bar should now be free moving and is held in the vehicle only by the steering assembly.



**Cars with power steering** will require that the power steering cylinder be unbolted from the bracket on the driver's side of the vehicle.



- 3) Remove the bolts holding the idler arm to the frame. Use a **1-5/16" socket or wrench** to remove the retaining nut attaching the pitman arm to the gearbox. Use the pitman arm puller to free the pitman arm from the gearbox.



**Note the position of the gearbox teeth and pitman arm to maintain proper steering when re-installing the pitman arm in a later step!**

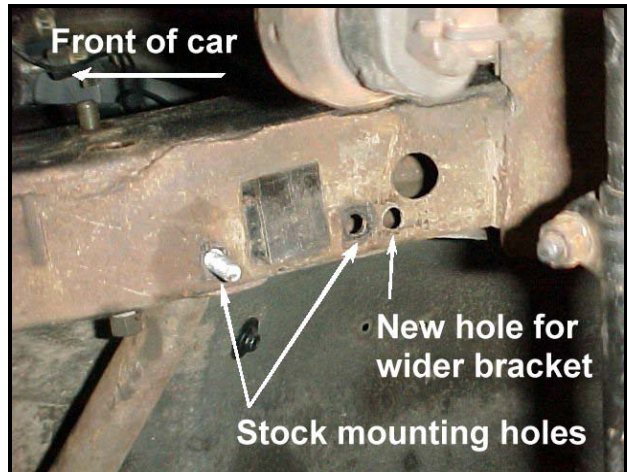


- 4) With the steering assembly hanging free, you should now be able to remove the stock sway bar.



*Leave the steering loose for installation of the Hotchkis sway bar at a later step.*

- 5) Every vehicle should have two holes on the passenger side and four holes on the driver's side in the frame from the factory for mounting a stock sway bar. Use the front factory holes to bolt the new sway bar retainer bracket in place. With the bracket bolted in to locate the second hole, drill out the second hole. Use the 3/8" bolts from **hardware kit #1735** to install the sway bar.



*Use the power steering bracket included in the kit and installation pictures to determine which hole must be moved or what holes may need to be added on the driver's side.*

- 6) Use the grease pack provided to put a heavy coat of grease on the inside of the sway bar bushings. Place one bushing over the passenger side of the sway bar and lift it into place on top of the steering rack. Use one of the bushing retainer brackets to keep the bar from falling out from the passenger side.

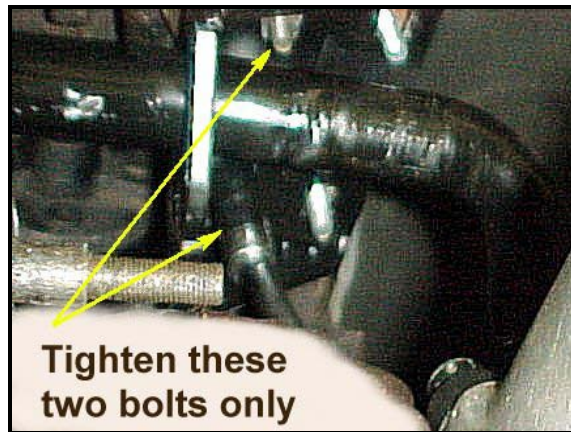
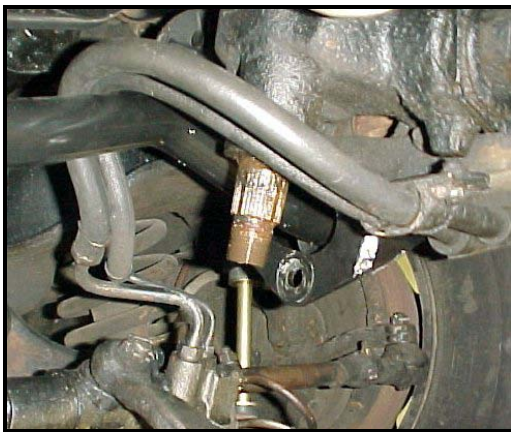




- 7) With the bar supported on the passenger side you can now slide the power steering bracket over the driver's side end of the bar. The bracket should slide over the bar and line up with the stock mounting holes and the welded stud in the frame.



Tighten the hardware on the inside edge of the bracket nearest to the hole that the bar passes through.



**Route the power steering lines over the sway bar!**

- 8) Take the second bushing (already greased in step 6) and place it over the driver's side with the sway bar retainer bracket. For cars without power steering (photo on the left) the bracket will mount to the holes in the same manner as the passenger side of the vehicle.



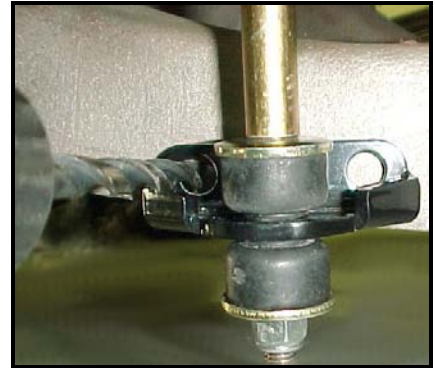
*The driver's side bracket mounts inside of the power steering bracket included with the Hotchkis kit. Slide the retainer bracket into place over the bolts and tighten the bracket into place.*



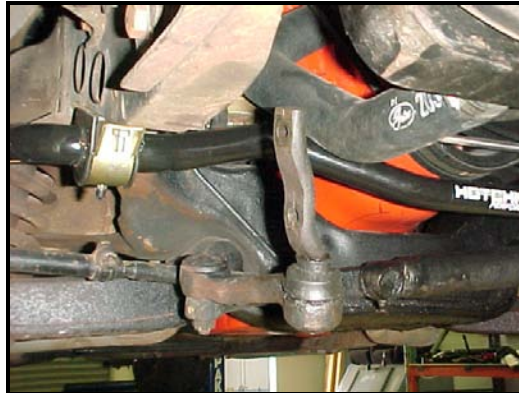
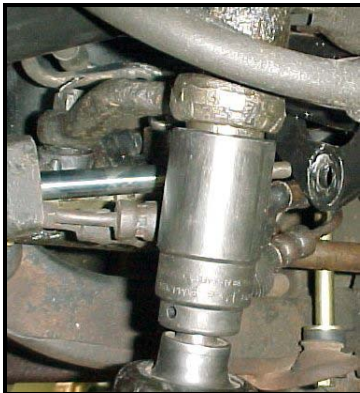
- 9) Install the new end links through the sway bar and the stock mounts on the lower a-arms. Tighten the end link and all sway bar bracket hardware into place.



For cars without a stock front bar, you will have to connect the end links to the sway bar. Attach the end link mount bracket included with the kit to the end links and tighten. Rotate the full assembly into position against the lower a-arm and drill the mounting holes in the arm. Use the 10mm bolts from **hardware kit #T1711** to secure the brackets.



- 10) With all of the sway bar components in place and tightened down you can re-attach the steering. Push the pitman arm back onto the gearbox in the same position as it was removed. Don't worry if it doesn't slide all the way onto the gear, when you tighten the retaining nut it will move the arm up the shaft. Re-install the bolts holding the idler arm.



- 11) **Cars with power steering** should re-attach the power steering cylinder to the new bracket.



- 12) Check that all hardware is tight. Cover the grease fittings using the zerk caps provided. Remove the jack stands and move on to installing the rear sway bar!

***IMPORTANT!*** For proper maintenance the bushings should be greased at least once a year (15,000 miles) or whenever excessive noise occurs. Use only non-lithium based grease. Lithium based grease can wash out with water.



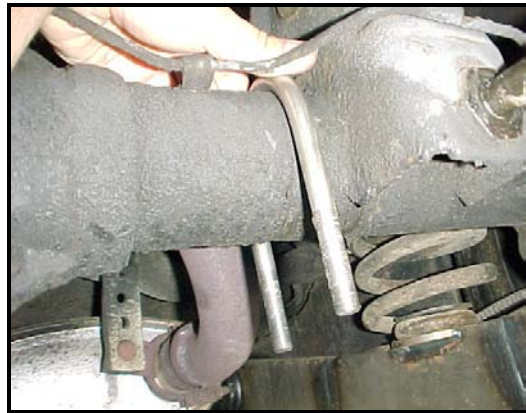
# HOTCHKIS SPORT SUSPENSION

## INSTALLATION OF HOTCHKIS PERFORMANCE REAR SWAY BAR



Before you proceed, please see the Special Notice on page 11 regarding frame type.

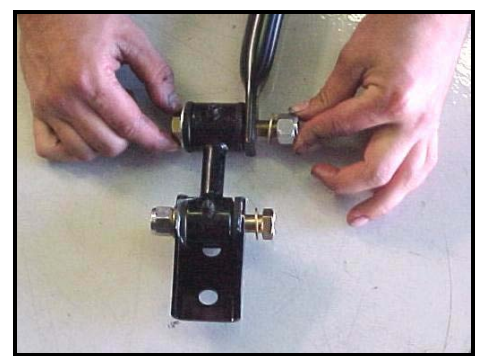
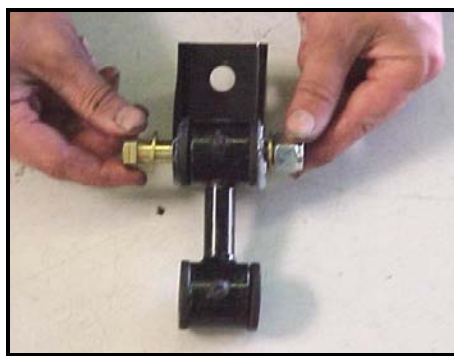
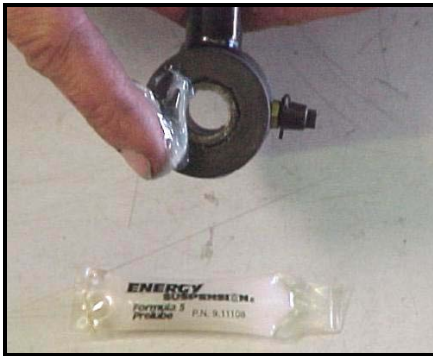
- 1) Securely block the front wheels of the vehicle and jack up the rear end. Support the rear end on jack stands and place the jack under the rear end for later use. *You will have to have the rear axle at approximate normal ride height to install the rear sway bar in a later step.*
- 2) Begin by placing the u-bolts from **hardware kit #T1722** over the rear axle. Place them roughly the same distance from the center of the axle, with the ends of the u-bolts pointed straight down. See the picture below for approximate spacing of the u-bolts when installed.



- 3) Use the grease pack provided to apply a heavy coat of grease to the inside of the sway bar bushings. Place the bushings over the bar. Push the brackets onto the sway bar bushings.

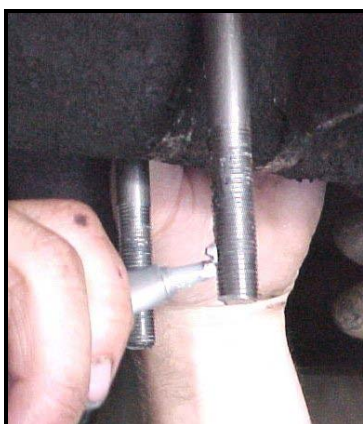


- 4) Use the grease provided to apply a heavy coat of grease to the sides of the bushings on the "dog bone" end links. Attach the mounting brackets to the end links using the shorter bolt from **hardware kit #T1712**. Attach the other end of the links to the sway bar using the longer bolt. Leave the attaching hardware loose. When attaching the hardware, **the large washer should be used to contact bushing surfaces and the small washer should be used to contact metal sway bar surface**. This prevents the bolt from pulling through the bushing.



- 5) Hang the sway bar from the u-bolts on the axle. Slide the axle mount bracket over the ends of the u-bolts. Hold the sway bar up into place with the bushing retainer brackets mounted to the axle bracket.

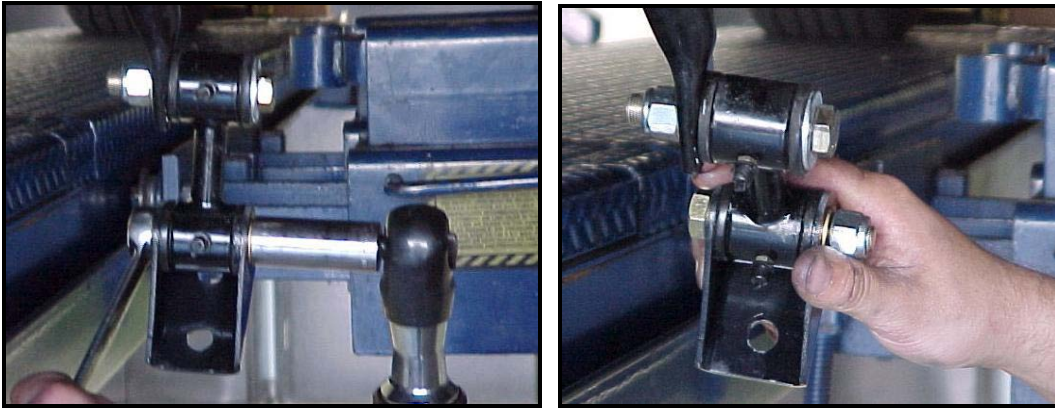
Install with the nuts loosely started onto the u-bolts so that the sway bar hangs freely from the axle. **Use the anti-seize provided with the u-bolts to lubricate the threads.** *Failure to lubricate the threads can destroy the nylock nuts and possibly break the u-bolt or seize the nut in place when tightened.*



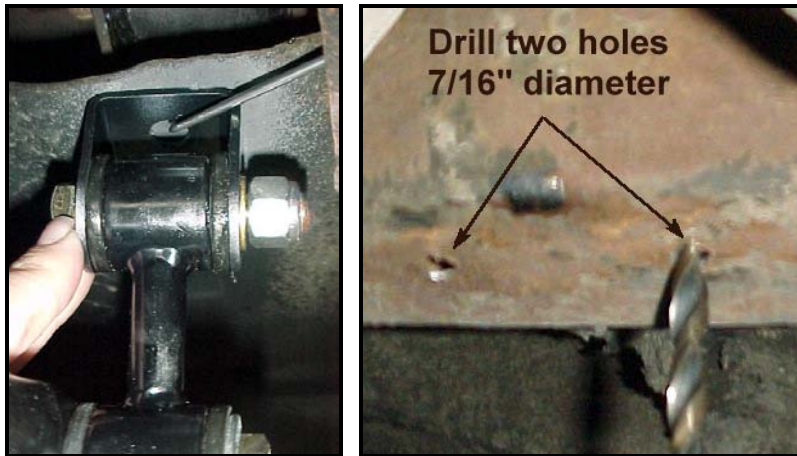
With the bar hanging freely you can slide the u-bolts along the axle until the bar is centered with the vehicle. Tighten down the nuts on the u-bolts to secure the position of the u-bolts and brackets.



- 6) Loosely tighten the hardware connecting the end links and brackets to the bar. *Leave just enough "slop" in the connections to allow the bar to rotate easily but still be fairly tight.*



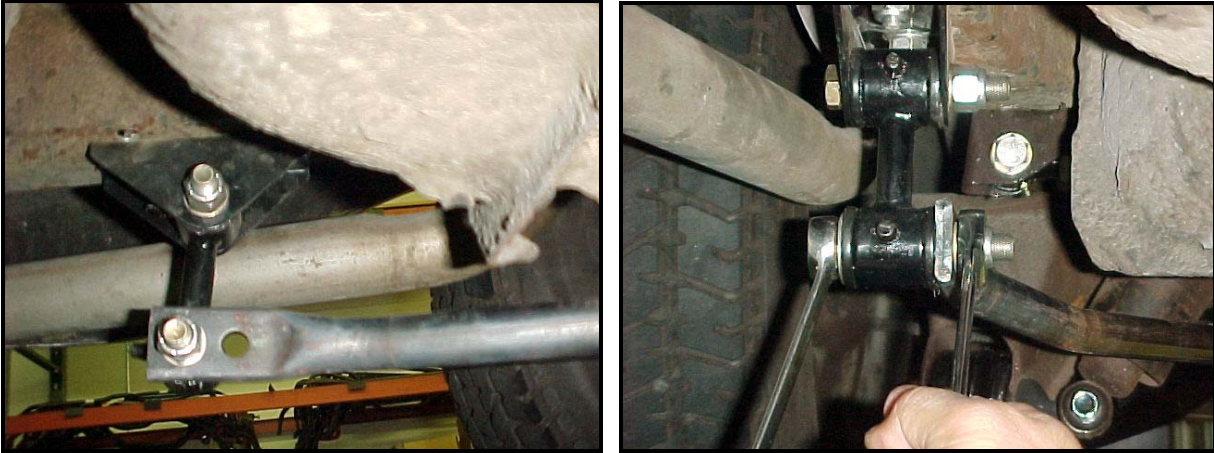
- 7) With the hardware loosely tightened you can now rotate the bar up, so that the brackets are resting against the frame. Once the brackets are in place use a scribe or similar tool to mark each hole for drilling. Drill out the holes for the brackets to 7/16" diameter. *To accurately determine the location of the holes the end links must not be loose enough to move left or right. **Make certain the axle is at its normal driving height for an accurate fit.***



- 8) Once the holes are drilled, use a coat hanger to loop around one stud on the retainer bracket. Slide the bracket in through the rear end of the frame until the studs fall through the holes. Hold one stud and push the other stud back through the hole to slide the coat hanger loop off the stud.



- 9) Rotate the sway bar so that you can bolt the brackets up to the stud plate in the frame using the 7/16" hardware from kit #T1719. You will only be using four of the nuts and the four smaller washers on the studs. *The four additional nuts and washers are extra hardware not used on this kit and may be discarded.* Tighten the nuts on the brackets and the end link hardware. Torque the end link hardware to 30ft/lbs.



You can also adjust the stiffness of the bar by changing the hole the end link mounts to. The hole nearest to the end of the bar softens the bar stiffness by lengthening the bar. The hole furthest from the end of the bar stiffens the bar by shortening the length of the bar.

- 10) Check that all hardware is tight. Cover the grease fittings with the zerk caps provided. Remove the jack and jack stands and you're finished installing the sway bar set!





# IMPORTANT NOTICE!!!

For some models, the vehicle may have a different rear section of the chassis frame. This alternate type of frame ends it's fully boxed tubing and transitions to a C-channel type. (See below) ↓

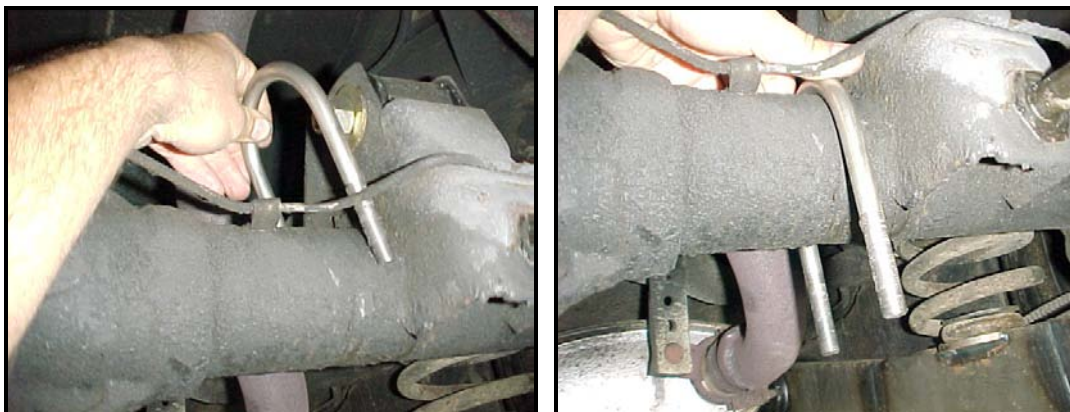


IF your vehicle has this type of frame, you must use **hardware kit # 1750** and proceed to the following special instructions.

Since the intersection between the box tubing and C-channel prevents you from using the retainer bracket, an alternative method will be used to mount the end link clevis brackets to the frame. We will use 2 bolts & washers to replace the retainer bracket.

## INSTALLATION OF HOTCHKIS PERFORMANCE REAR SWAY BAR

- » Securely block the front wheels of the vehicle and jack up the rear end. Support the rear end on jack stands and place the jack under the rear end for later use. *You will have to have the rear axle at approximate normal ride height to install the rear sway bar in a later step.*
- » Begin by placing the u-bolts from **hardware kit #T1722** over the rear axle. Place them roughly the same distance from the center of the axle, with the ends of the u-bolts pointed straight down. See the picture below for approximate spacing of the u-bolts when installed.



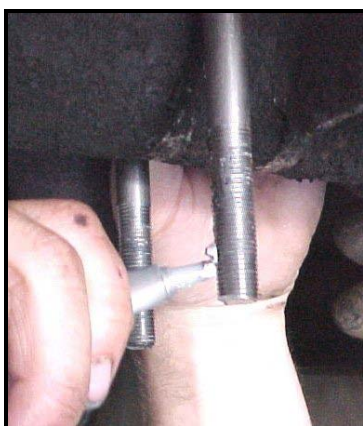


- » Use the grease pack provided to apply a heavy coat of grease to the inside of the sway bar bushings. Place the bushings over the bar. Push the brackets onto the sway bar bushings.



- » Hang the sway bar from the u-bolts on the axle. Slide the axle mount bracket over the ends of the u-bolts. Hold the sway bar up into place with the bushing retainer brackets mounted to the axle bracket.

Install with the nuts loosely started onto the u-bolts so that the sway bar hangs freely from the axle. **Use the anti-seize provided with the u-bolts to lubricate the threads.** *Failure to lubricate the threads can destroy the nylock nuts and possibly break the u-bolt or seize the nut in place when tightened.*



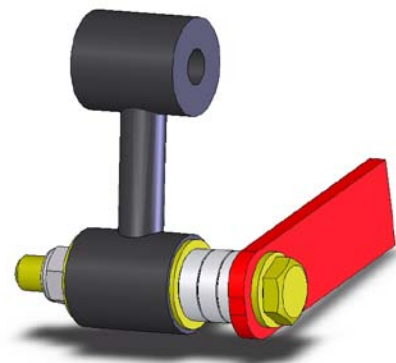
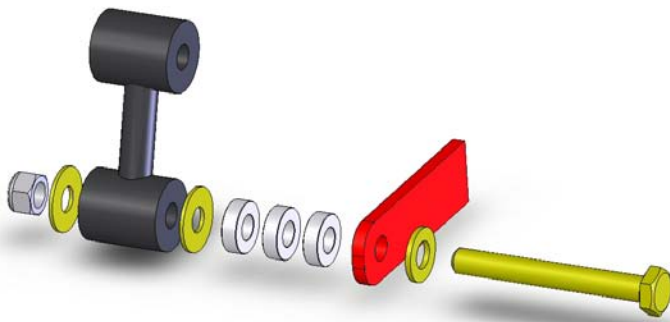
With the bar hanging freely you can slide the u-bolts along the axle until the bar is centered with the vehicle. Tighten down the nuts on the u-bolts to secure the position of the u-bolts and brackets.



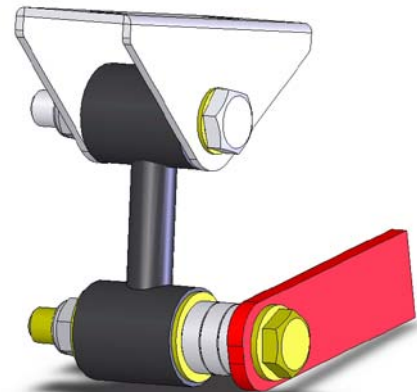
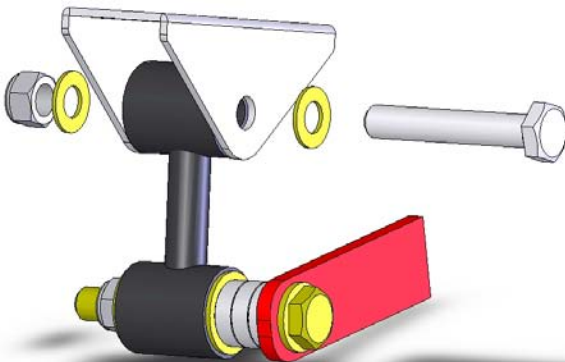
- » Install the ½"-20 x 4" bolt through the sway bar hole and dogbone end link as shown in the picture. Lightly tighten hardware.

Hardware Order from Inboard to Outboard

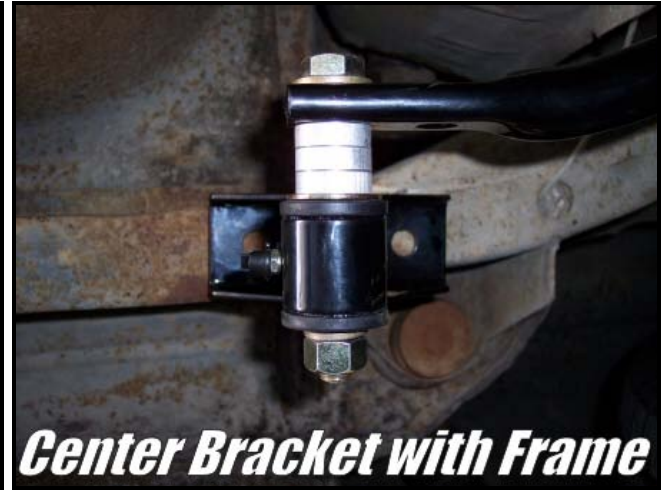
1. Bolt (½"-20 x 4")
2. Small Washer
3. Swaybar
4. 3 Spacers
5. Large Washer
6. Dogbone
7. Large Washer
8. Nylock Nut



- » Install the Clevis Bracket onto the dogbone endlink. Lightly tighten.



- » To accurately determine the location of the holes, the end links must NOT be loose enough to move left or right. Make certain the axle is at its normal driving height for an accurate fit. With the hardware lightly tightened, you can now rotate the bar up, so that the brackets are resting against the frame. Make sure both clevis brackets lay in the center of the frame. Position the clevis bracket onto the frame so that it will be possible to use either hole on the sway bar end.



- » With a marker or scribe, mark the frame for the mounting holes. Drill out the holes to accept a 7/16" bolt. Do this for both sides.

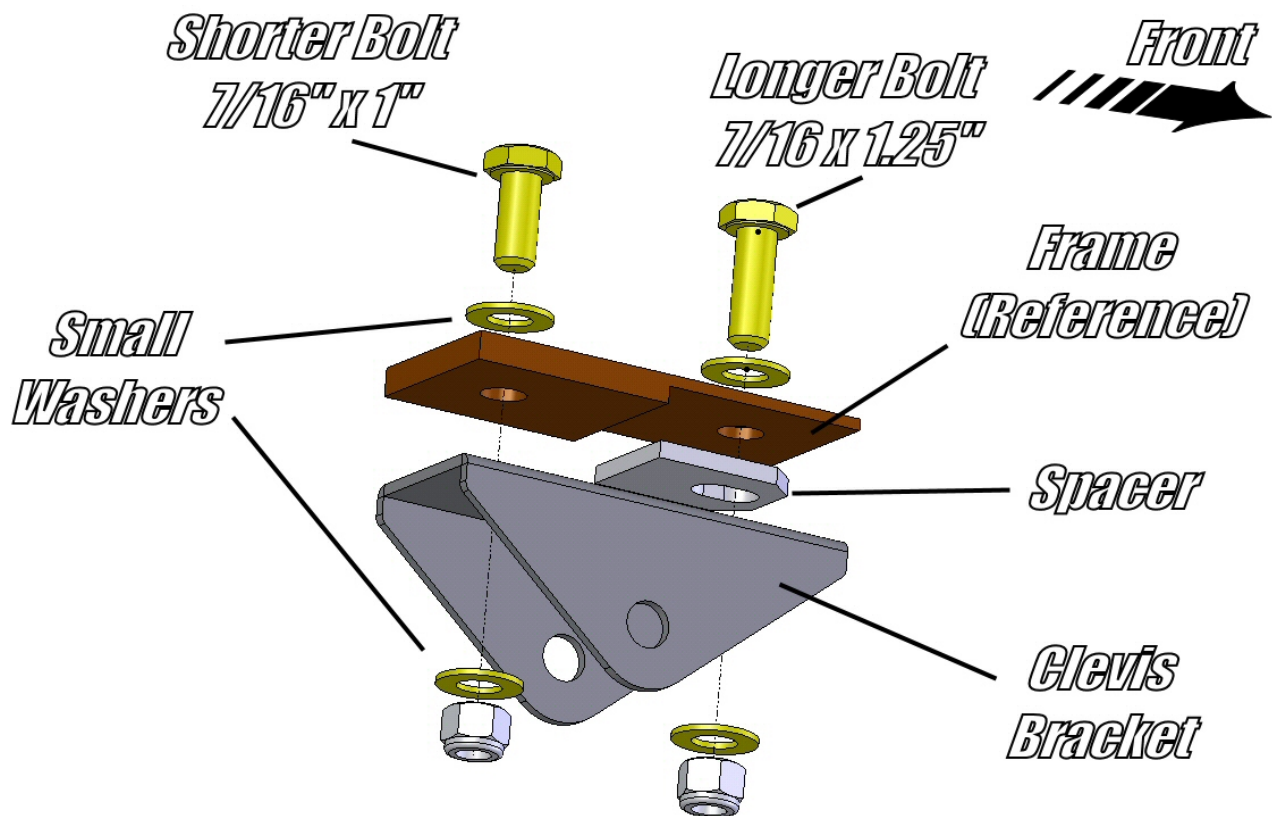


- » Once the holes are drilled, grab a 7/16" x 1.25" bolt (longer) and a 7/16" washer. Using a telescoping magnet wand, fish the bolt and washer through the box tubing and set the bolt into it's drilled out hole.





- » Uninstall the clevis bracket & dogbone from the sway bar for now. It will be easier to install the bracket detached from the sway bar.
- » Here's a quick example of how the hardware should install. Fully tighten these bolts at this time. You may need to use one of the provided spacers to make up for the uneven surface of the frame. Your kit comes with 2 thin spacers and 2 thick spacers.



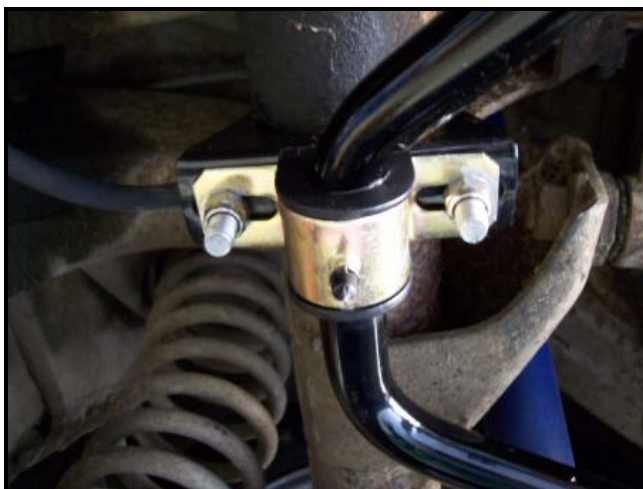
- » Once the clevis brackets are installed, loosen, but do not remove, the U-bolts holding the axle clamps. This eases swaybar centering and attaching the endlinks to the dogbones.
- » Attach the dogbones to the clevis bracket.



- » Attach the swaybar to the dogbones.



- » After all the hardware is loosely in place, fully tighten the hardware starting with the U-bolts. Make sure the U-bolts are facing straight down. Finish off the install by tightening the dogbone hardware. Your Done!!!





**RE-CHECK ALL HARDWARE AFTER THE FIRST FIVE MILES!**

**IMPORTANT!** For proper maintenance the bushings should be greased at least once a year (15,000 miles) or whenever excessive noise occurs. Use only non-lithium based grease. Lithium based grease can wash out with water.

**SEE NEXT PAGE FOR PARTS LIST**



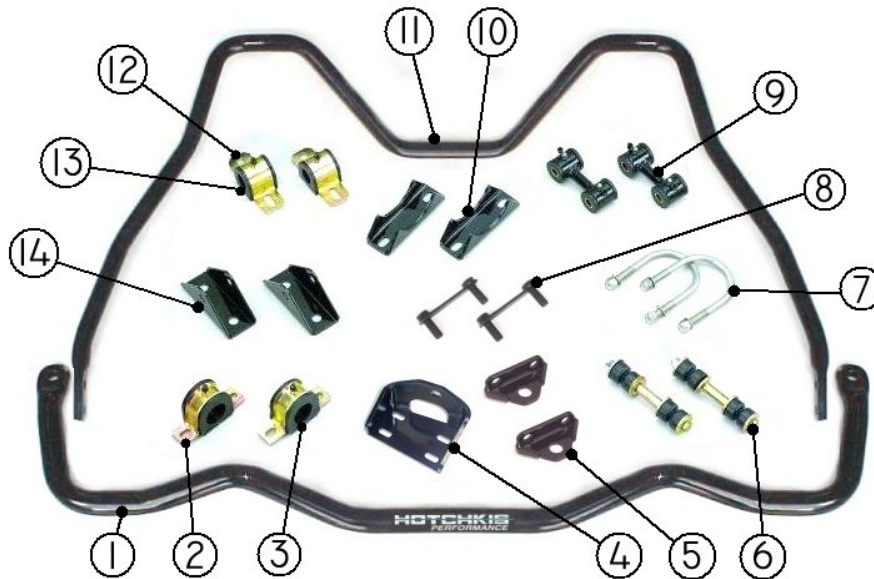
**UNIVERSAL  
AUTOMOTIVE  
SPORT SUSPENSION**

## 59-64 Chevrolet B-body Sport Sway Bar Kit, Parts List

Hotchkis P/N	Item Description	Quantity per kit
1	22810005 Front Sway Bar, 59-64 Chevrolet B-body	1
2	23090066 Sway Bar Bushing Retainer Bracket, Greaseable Heavy Duty	2
3	5637.01 1-1/4" Sway Bar Bushing, Greaseable Heavy Duty	2
4	23410005 Power Steering Bracket, 59-64 Chevrolet B-body	1
5	23810005 A-arm End Link Mount Bracket, 59-64 Chevrolet B-body	2
6	19-416-BL Endlink Kit, 59-64 Chevrolet B-body (two end links & hardware)	1
7	T1722 3" U-bolts w/ hardware, kit (see hardware kit listing on next page)	1
8	23990117 Stud Plate, Welded	2
9	25210035 3" End Link Kit, Dog Bone Style (two end links per kit)	1
10	T2211 Axle Mount Bracket Kit, 59-64 Chevy B-body (two brackets per kit)	1
11	22910005 Rear Sway Bar, 59-64 Chevrolet B-body	1
12	15.12.06.39 Sway Bar Bushing Retainer Bracket, Greaseable Car Style	2
13	5340G 1" Sway Bar Bushing, Greaseable Car Style	2
14	T2221 Rear Frame Bracket Kit, 59-64 Chevy B-body (two brackets per kit)	1

### Items Not Shown

15	9.11108 Grease Pack	2
16	n/a Instruction Set	1



**HARDWARE KITS LISTED ON NEXT PAGE**



## Hardware Kits For Sway Bar Kit 2268 ( one of each kit listed )

Hotchkis P/N	Item Description	Quantity per kit
--------------	------------------	------------------

### *Hardware Included in Kit T1711*

17	M10-1.5X25CS	10mm, Hex Head Bolt	4
18	M10SAEWASH	10mm Flat Washer	8
19	10NYLOCK	10mm Nylock Nut	4

### *Hardware Included in Kit T1712*

20	12-20 X 3"	1/2" Bolt, 3" long	2
21	1/2-20X2.75"	1/2" Bolt, 2-3/4" long, Hex Head	2
22	7/16USS FW	7/16" Flat Washer	8
23	1/2AN	1/2" Flat Washer	4
24	1/2-20 NUT	1/2" Nylock Nut	4

### *Hardware Included in Kit 1719*

25	7/16NYLOCK	7/16" Nylock Nut	8
26	7/16AN	7/16" Flat Washer	4
27	7/16 SAE FW	7/16" Rear Sway Bar Washer	4

### *Hardware Included in Kit T1722*

-	T1722	3" U-bolt, Stainless Steel	2
-	7/16AN	7/16" Flat Washer	4
-	7/16NYLOCK	7/16" Nylock Nut	4
28	ND907	Anti-Sieze, 1/8oz. Tube	1

### *Hardware Included in Kit 1735*

29	3/8-24X1.25	3/8" Bolt, 1.25" Long, Hex Head	8
30	3/8AN	3/8" Flat Washer	16
31	3/8NYLOCK	3/8" Nylock Nut	8

### *Hardware Included in Kit 1750 (Not Shown)*

29	16400147	Aluminum Spacers 2pck.	3
30	1/2-20x4	1/2 - 20 x 4 G8 HBCS Bolt	2
31	7/16-20x11/4	7/16 - 20 x 1 1/4 G8 HBCS Bolt	2
32	7/16-20x1	7/16 - 20 x 1 G8 HBCS Bolt	2
33	7/16SAEWASH	7/16 SAE Washer G8	8
34	23410006	Spacer Plate, B Body - Thick	2
35	23410007	Spacer Plate, B Body - Thin	2



# HOTCHKIS HOTCHKIS SPORT SUSPENSION

## TMS

TOTAL VEHICLE SYSTEM

CHECK OUT EVERYTHING ELSE HOTCHKIS PERFORMANCE MAKES FOR YOUR 59-64  
B-BODY CHEVROLET!!



*Adjustable upper trailing arm, to help eliminate pinion angle vibrations!*



*Boxed lower trailing arms, to help stiffen up the rear end!*



*Double adjustable pan-hard rod to help center the axle!*

Visit Hotchkis Performance on the web at [www.hotchkis.net](http://www.hotchkis.net) or  
Call (562) 907-7757 to order!





## Hotchkis Performance LLC Return Policy & Limited Warranty

Effective December 1, 2010 all Hotchkis products must be registered to qualify for warranty at [www.hotchkis.net](http://www.hotchkis.net) or via the mail-in warranty card, included with the product, within 30 days of the original purchase date.

**IMPORTANT:** This warranty supersedes all other warranties included with this product.

### Return Policy

We want you to be completely satisfied with your Hotchkis Performance product. For products, presenting signs of shipping damage please contact the freight carrier immediately. All our products are guaranteed to be free from manufacturer's defects. If your order arrives with a manufacture defect, please contact our Customer Service Department at (562) 907-7757. You will be assigned a Returned Goods Authorization Number (RGA). The package you return must show the RGA on the outside of the package, include the original invoice and be shipped prepaid to our facility. The product has to be unused and in its original packaging materials. Exchanges or refunds made after 30 days will be subject to a 20% restocking charge. **If you purchased your Hotchkis Performance product from an authorized dealer, you are still covered by this return policy. All returns however, should be made to your dealer, not to Hotchkis Performance directly.**

### Limited Warranty

Hotchkis Performance offers a Limited Warranty against defects in materials and workmanship for the term of 36 months (3 years) from the date of purchase of this product. This Warranty only applies to the original retail purchaser who retains ownership of the vehicle on which the product was originally installed. If the product is determined to be defective, Hotchkis Performance will repair, replace or refund the purchase price of the defective product at Hotchkis Performance's sole discretion, which shall fully satisfy and discharge any and all warranty claims. Any repaired or replaced product will be returned to the sender excluding the cost of freight. **Products must be registered to qualify for warranty at [www.hotchkis.net](http://www.hotchkis.net) or via the mail-in warranty card, included with the product, within 30 days of the original purchase date.**

### Exclusions from Warranty

Items offered but not manufactured by Hotchkis Performance are warranted according to the manufacturer's terms and are not covered by this limited warranty. Hotchkis Performance shall not be responsible for any labor, removal, installation, re-installation or maintenance costs. This warranty does not cover the cosmetic finish or plating of any product or any normal wear and tear to any product including, but not limited to bushings, brackets, end-links, hardware, steering components, shocks or springs. In addition, this warranty does not apply to any products that have been:

- **Improperly installed or installed by someone other than a qualified, licensed auto mechanic experienced in the installation and removal of suspension products;**
- **Improperly serviced, misused, or modified, altered or subjected to abuse, negligence, accident or collision;**
- **Installed in any vehicle that has been modified;**
- **Installed on any vehicle that has carried loads in excess of automobile manufacturer suggested weight limits; or**
- **Installed on any vehicle that has been subject to abnormal or excessive use, including rallying, racing, or racing-type activities or off-road use.**

### Limitation of Warranty

This limited warranty is the entire and only warranty for the products and may not be modified or supplemented by any other person or company in any form. Any description of the products, by anyone, is for the sole purpose of identifying them and is not part of the basis of the bargain, and does not constitute a warranty that the products will conform to that description. The statements of any salesperson do not constitute part of this limited warranty and cannot be relied upon as a warranty.

**THERE ARE NO WARRANTIES, EXPRESSED OR IMPLIED, INCLUDING ANY IMPLIED WARRANTIES OF MERCHANTABILITY OR FITNESS FOR A PARTICULAR PURPOSE, WHICH EXTEND BEYOND THE DESCRIPTION ON THE FACE HEREOF. ANY IMPLIED WARRANTIES ARE DISCLAIMED TO THE FULLEST EXTENT PERMITTED BY LAW. THIS WARRANTY DOES NOT COVER CONSEQUENTIAL DAMAGES, LOSS OF TIME OR REVENUES, INCONVENIENCE, LOSS OF USE OF THE VEHICLE, DAMAGE TO THE VEHICLE OR COMPONENTS OF THE VEHICLE, ANY OTHER TYPE OF CONSEQUENTIAL DAMAGES, OR OTHER INCIDENTAL OR INDIRECT DAMAGES. HOTCHKIS' MAXIMUM LIABILITY UNDER THIS WARRANTY SHALL IN NO EVENT EXCEED THE PURCHASE PRICE OF THE PRODUCT.** Some states do not allow limitations on how long an implied warranty lasts or the exclusion or limitation of incidental or consequential damages and in such states the above limitations or exclusions may not apply. This limited warranty gives the purchaser specific legal rights and the purchaser may have other rights that may vary from state to state.

#### **Technical Information**

Hotchkis Performance makes every effort to ensure that you are provided with the most accurate and up-to-date technical information. However, all technical information is approximate and may vary upon application. Additional suspension components may be needed in some applications, depending upon the make, model, engine and chassis of the vehicle. Hotchkis Performance is not responsible for any consequences resulting from manufacturer's technical mid-year changes. Hotchkis Performance products should only be installed by a qualified, licensed auto mechanic experienced in the installation of such products.

#### **Warranty Claim Procedure:**

The answer to ALL the following questions should be YES before making a warranty claim:

- **Did you register the product at [www.hotchkis.net](http://www.hotchkis.net) or via the mail-in warranty card within 30 days of purchase?**
- **Is the product appropriate to your application?**
- **Did you carefully and thoroughly read the instructions provided along with the product?**
- **Do you have the original invoice or sales receipt?**
- **Is the return date within 36 months from the purchase date?**
- **Are you the original purchaser?**
- **Was the product properly installed by a qualified, licensed auto mechanic?**
- **Has the product been installed on the original vehicle on which it was installed at all times?**
- **Is the product unmodified and clean?**
- **Is the reason for return a legitimate product defect?**

If the answer to all these questions is YES, please contact our Customer Service Department at (562) 907-7757. You will be given a Returned Goods Authorization Number (RGA) valid for 60 days. You will also be asked to ship the product prepaid to our facility. All shipments MUST be (i) prepaid, (ii) include the original invoice or sales receipt, (iii) show the RGA on the outside of the package and (iv) include your name, address, make and model of the vehicle, and a brief description of the claimed defect, including the circumstances under which the defect occurred. If the warranty claim is deemed valid then Hotchkis will estimate shipping costs to return the repaired or replacement part and contact you for payment. Hotchkis's Limited warranty requires that any repaired or replaced product will be returned to the sender excluding the cost of freight. Warranty related inquires should be sent to the following address:

**HOTCHKIS PERFORMANCE, LLC  
C/O CUSTOMER SERVICE**



**8633 Sorensen Avenue  
SANTA FE SPRINGS, CA 90670**

Hotchkis Performance will not accept product returns without the RGA number, receipt and the information described above. C.O.D. or collect shipments will be refused. Once the returns are received at Hotchkis Performance, we will evaluate the products, verify the sales receipt, and investigate the warranty claim. Any repaired or replaced product will be returned to the sender.

**Effective December 1, 2010. This return policy and limited warranty supersedes all previous policy and warranty statements. Policies and warranties are subject to change without notice. Hotchkis Performance is not responsible for printing errors.**