

## *2236R Sway Bar Installation Instructions*

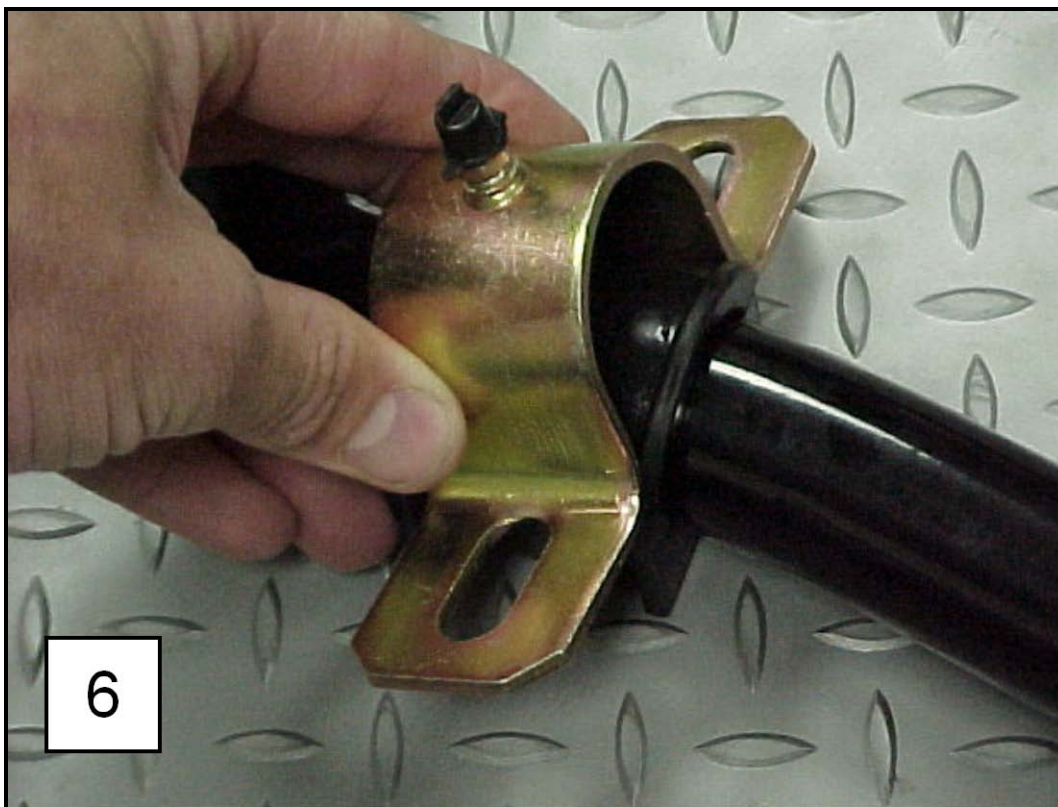
Thank you for your purchase of this Hotchkis Performance product. Your stabilizer bar set was designed with the performance and durability you've come to expect from Hotchkis Performance.

### *Rear Sway Bar Installation:*

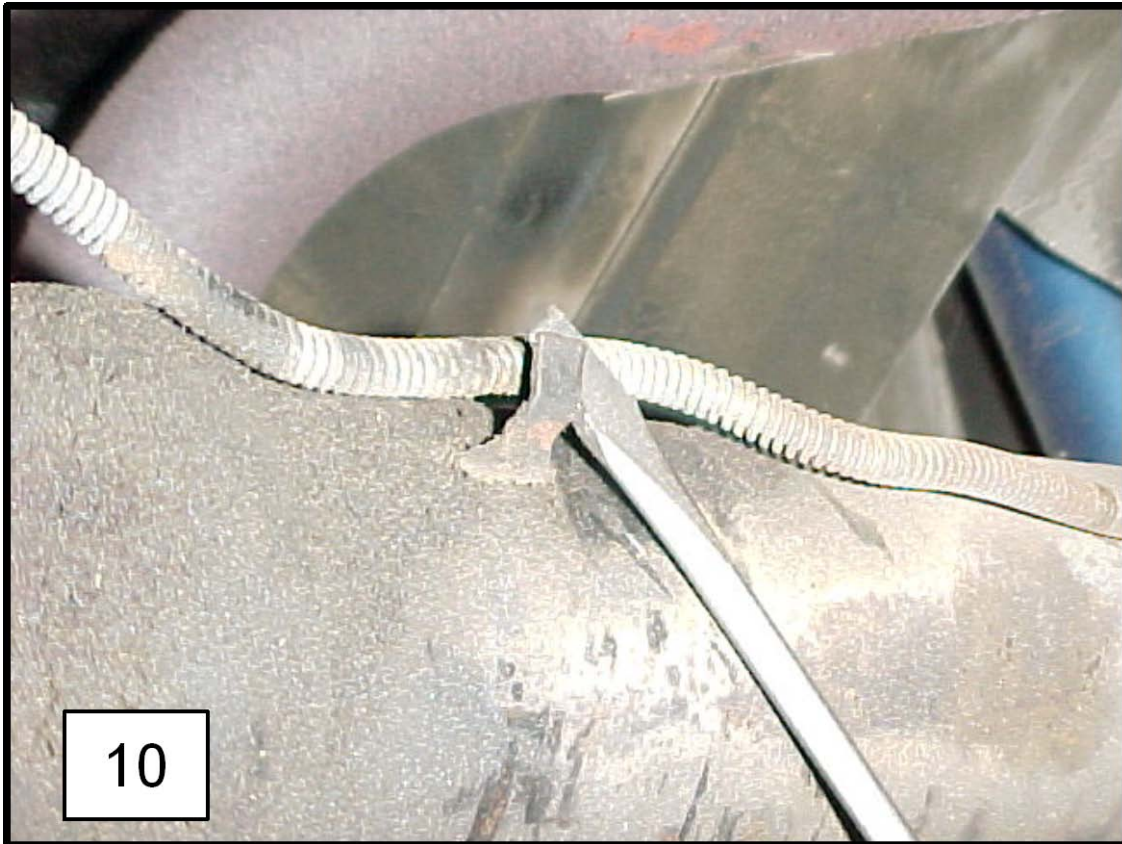
- 1R. Jack up the vehicle and properly support with jack stands or lift jacks. Make sure the rear end is supported with the vehicle's load on the leaf springs. This is to ensure you install the rear bar in the proper position.
- 2R. Take the bushings and grease the inner surface with the included white silicon grease.



- 3R. Install the bushings on the bar. (5) Place the bracket over top of the bushing. (6)



- 4R. Take the sway bar assembly and hold it up under the rear end of the car. The arms will point forward and the dog bone end links point up. Check for exhaust clearance in this area. You may have to have the exhaust pipes re-bent to provide clearance for the new sway bar assembly. Any competent exhaust shop can handle this modification easily.
- 5R. After you determine there's enough clearance for the bar, note the approximate location of the sway bar axle bushing.
- 6R. Take a screwdriver and carefully pry up the brake line to allow the U-Bolt to drop down over the axle. (10)



- 7R. Install the U-Bolts on the axle and slip the axle bracket over the U-Bolt on the bottom side of the axle. Use masking or duct tape to secure them. Place the sway bar assembly under the axle and slip the U-bolt legs through the sway bar brackets. Place washers and nylock nuts on the U-Bolt. Snugly fasten the nylock nuts a bit, but do not fully tighten at this time.



11



## 8R *Undo Frame Rail Lines*

We are going to be mounting the dog bone endlinks to the frame rails. However, we first need to access the side of the frame rails. We will need to undo the fuel/brake lines that are mounted to the rails.

The driver side has a brake line and vent line that is mounted to the frame rail. Undo the line tabs as shown in the picture below.





The passenger side has the fuel line mounted to the frame rail. Undo the line tabs as shown in the picture below.





9R *Install Frame Rail Reinforcements*

We will be installing reinforcement plates onto the frame rails. This will require drilling two  $\frac{3}{4}$ " holes for through each frame rail.

Start on the passenger side frame rail. The hole that was used to hole the line tab is in the same position as one of your holes. (see picture) Use one of the reinforcement plates as a template to mark out the other hole.







Drill out the  $\frac{3}{4}$ " hole only on the inner side of the frame rail. Do not drill through both walls of the frame rail. We found that a unibit works best.

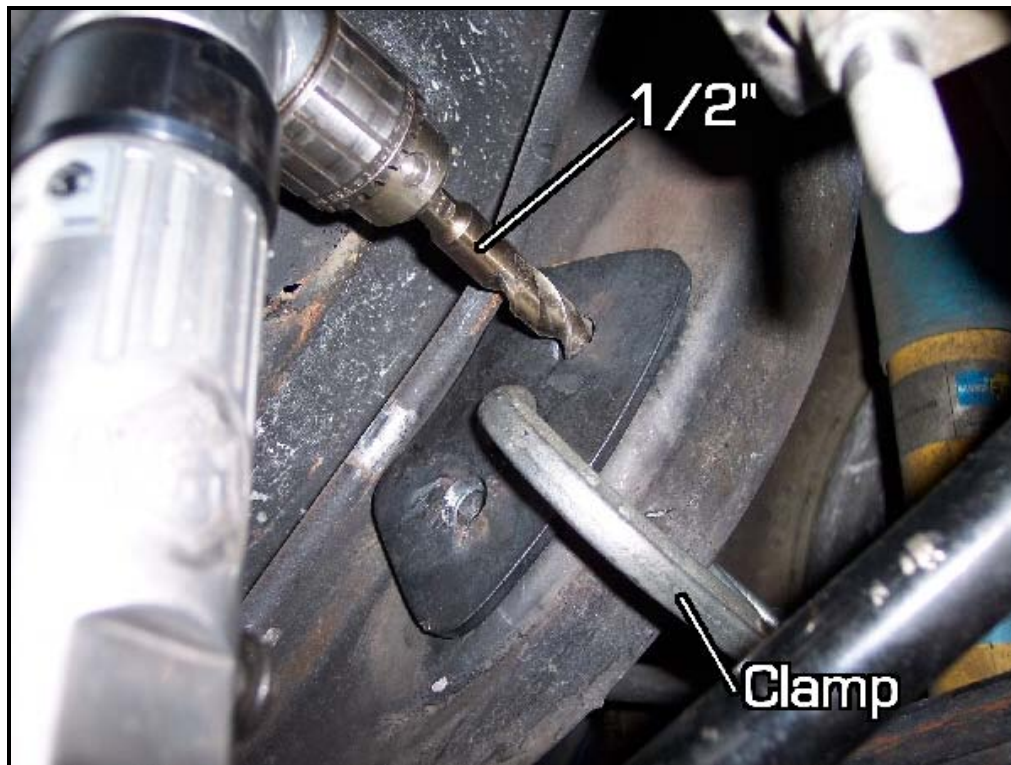






Insert the reinforcement plate with the 2 tubes welded to it into the frame rail. Use a vise clamp to secure the plate onto the frame rail. Drill the outer wall of the frame rail with a  $\frac{1}{2}$ " drill bit. The reinforcement tubes will act as a guide for you to drill. So when you are finished, you will have two  $\frac{3}{4}$ " holes on the inside of the frame rail and two  $\frac{1}{2}$ " holes on the outer sided of the frame rail.

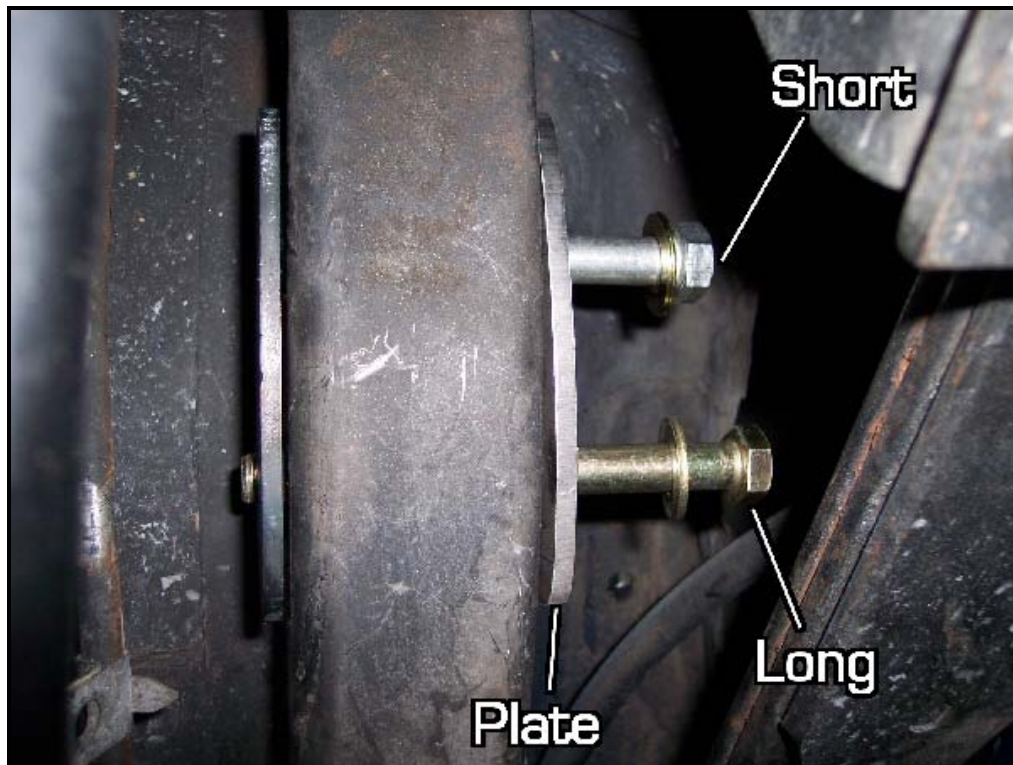




Remove the vise clamp and insert 1 short bolt w/ washer and 1 long bolt w/ washer from the outside of the frame rail. (hardware kit **#1757**) Make sure to add the other reinforcement plate to the outside before you insert the bolts through the frame.







Install a washer and a nut to the top (shorter) bolt. Do not fully tighten this bolt at this time. (hardware kit **#1757**)





Grease up your new dog bone end links with the provided grease. Install the dog bone on the bottom (longer bolt) with the grease fittings pointing rearward.

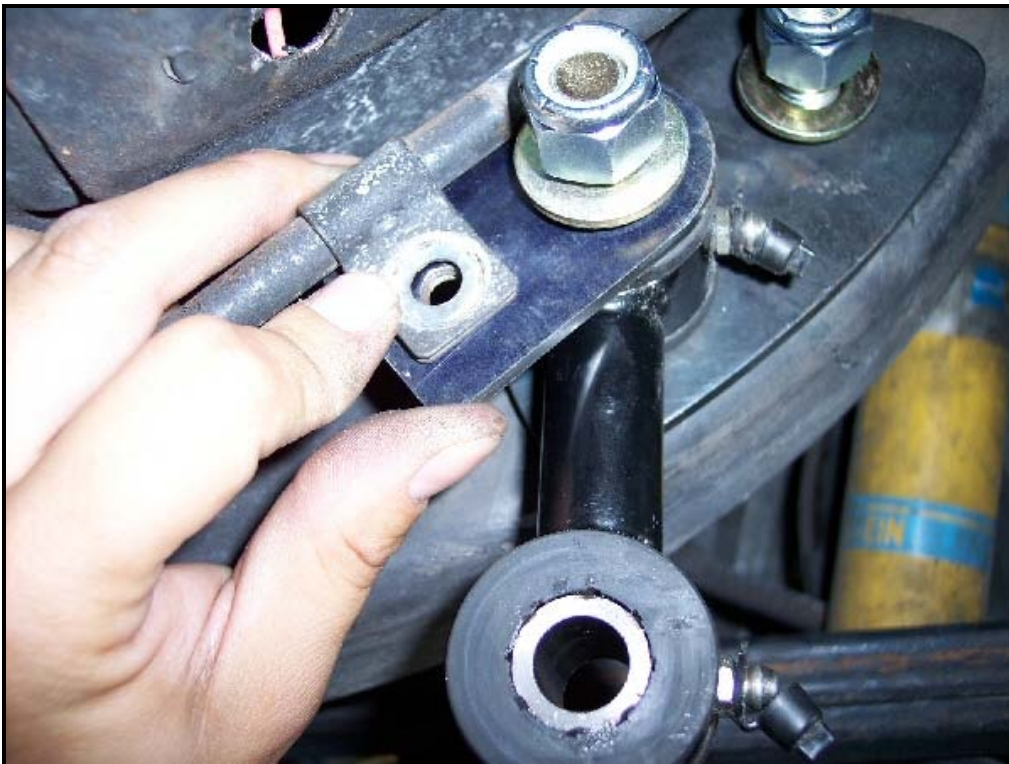


Install the line bracket onto the long bolt and install a washer and nut. Do not fully tighten at this time. (hardware kit **#1757**)





Line up the mounting tab with the line bracket you just installed. Use the provided 5/16" bolt and washer to secure the mounting tab to the line bracket. (hardware kit **#1757**) Make sure the 1/2" Nut is not too close to the fuel line.





Fully tighten both short and long bolts completely.

You're given new hardware for attaching the dog bone end links to the sway bar. Use the bolts, nuts, and washers from the **#T1712** hardware kit.

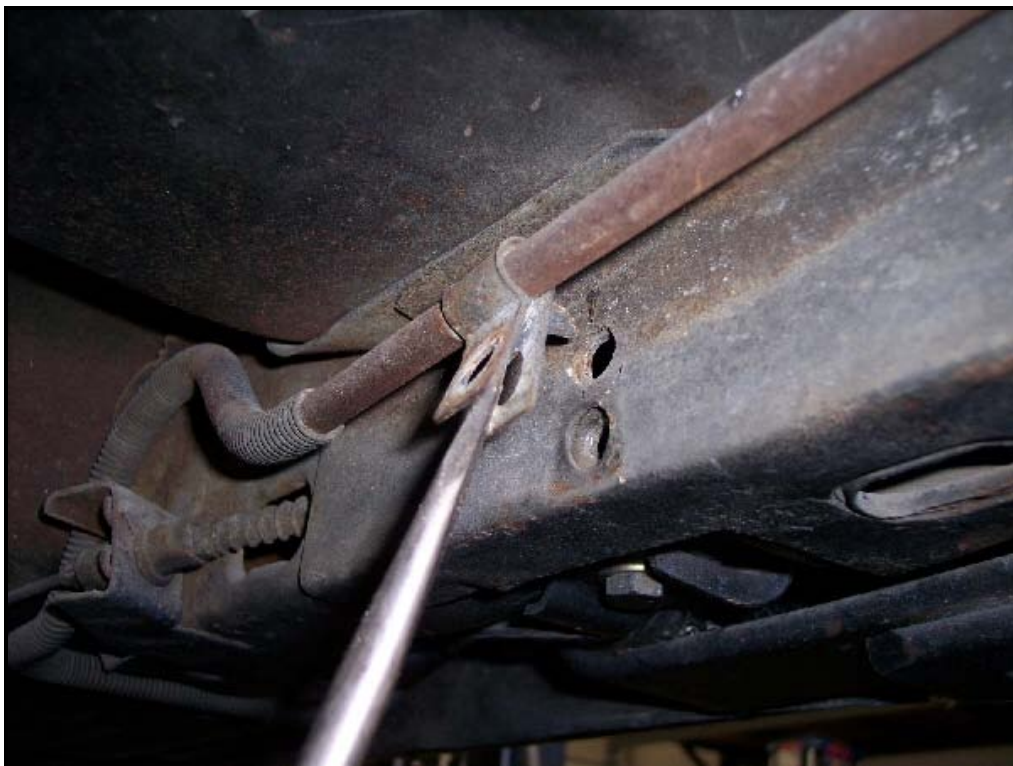






Once the passenger side is completely mounted together, you can now figure out where the other frame rail reinforcement plate goes on the driver side. Mock up the driver side dog bone end link onto the sway bar and mark where the bottom hole should be. Again, use the reinforcement plate as guide to mark the upper hole. Drill the holes in the same manner as before.

You can remove the mounting tabs that are no longer in use.





10R *Double Check all Hardware*

Double check and make sure all hardware is full tightened before driving the vehicle. You are finished with the rear sway bar kit.





# Hotchkis Performance LLC

## Return Policy & Limited Warranty

Effective December 1, 2010 all Hotchkis products must be registered to qualify for warranty at [www.hotchkis.net](http://www.hotchkis.net) or via the mail-in warranty card, included with the product, within 30 days of the original purchase date.

**IMPORTANT:** This warranty supersedes all other warranties included with this product.

### Return Policy

**We want you to be completely satisfied with your Hotchkis Performance product. For products, presenting signs of shipping damage please contact the freight carrier immediately. All our products are guaranteed to be free from manufacturer's defects. If your order arrives with a manufacture defect, please contact our Customer Service Department at (562) 907-7757. You will be assigned a Returned Goods Authorization Number (RGA). The package you return must show the RGA on the outside of the package, include the original invoice and be shipped prepaid to our facility. The product has to be unused and in its original packaging materials. Exchanges or refunds made after 30 days will be subject to a 20% restocking charge. If you purchased your Hotchkis Performance product from an authorized dealer, you are still covered by this return policy. All returns however, should be made to your dealer, not to Hotchkis Performance directly.**

### Limited Warranty

**Hotchkis Performance offers a Limited Warranty against defects in materials and workmanship for the term of 36 months (3 years) from the date of purchase of this product. This Warranty only applies to the original retail purchaser who retains ownership of the vehicle on which the product was originally installed. If the product is determined to be defective, Hotchkis Performance will repair, replace or refund the purchase price of the defective product at Hotchkis Performance's sole discretion, which shall fully satisfy and discharge any and all warranty claims. Any repaired or replaced product will be returned to the sender excluding the cost of freight. Products must be registered to qualify for warranty at [www.hotchkis.net](http://www.hotchkis.net) or via the mail-in warranty card, included with the product, within 30 days of the original purchase date.**

### Exclusions from Warranty

**Items offered but not manufactured by Hotchkis Performance are warranted according to the manufacturer's terms and are not covered by this limited warranty. Hotchkis Performance shall not be responsible for any labor, removal, installation, re-installation or maintenance costs. This warranty does not cover the cosmetic finish or plating of any product or any normal wear and tear to any product including, but not limited to bushings, brackets, end-links, hardware, steering components, shocks or springs. In addition, this warranty does not apply to any products that have been:**

- **Improperly installed or installed by someone other than a qualified, licensed auto mechanic experienced in the installation and removal of suspension products;**
- **Improperly serviced, misused, or modified, altered or subjected to abuse, negligence, accident or collision;**
- **Installed in any vehicle that has been modified;**
- **Installed on any vehicle that has carried loads in excess of automobile manufacturer suggested weight limits;**  
**or**
- **Installed on any vehicle that has been subject to abnormal or excessive use, including rallying, racing, or racing-type activities or off-road use.**

### Limitation of Warranty

**This limited warranty is the entire and only warranty for the products and may not be modified or supplemented by any other person or company in any form. Any description of the products, by anyone, is for the sole purpose of identifying them and is not part of the basis of the bargain, and does not constitute a warranty that the products will conform to that description. The statements of any salesperson do not constitute part of this limited warranty and cannot be relied upon as a warranty.**

**THERE ARE NO WARRANTIES, EXPRESSED OR IMPLIED, INCLUDING ANY IMPLIED WARRANTIES OF MERCHANTABILITY OR FITNESS FOR A PARTICULAR PURPOSE, WHICH EXTEND BEYOND THE DESCRIPTION ON THE FACE HEREOF. ANY IMPLIED WARRANTIES ARE DISCLAIMED TO THE FULLEST EXTENT PERMITTED BY LAW. THIS WARRANTY DOES NOT COVER CONSEQUENTIAL**

DAMAGES, LOSS OF TIME OR REVENUES, INCONVENIENCE, LOSS OF USE OF THE VEHICLE, DAMAGE TO THE VEHICLE OR COMPONENTS OF THE VEHICLE, ANY OTHER TYPE OF CONSEQUENTIAL DAMAGES, OR OTHER INCIDENTAL OR INDIRECT DAMAGES. HOTCHKIS' MAXIMUM LIABILITY UNDER THIS WARRANTY SHALL IN NO EVENT EXCEED THE PURCHASE PRICE OF THE PRODUCT. Some states do not allow limitations on how long an implied warranty lasts or the exclusion or limitation of incidental or consequential damages and in such states the above limitations or exclusions may not apply. This limited warranty gives the purchaser specific legal rights and the purchaser may have other rights that may vary from state to state.

#### Technical Information

Hotchkis Performance makes every effort to ensure that you are provided with the most accurate and up-to-date technical information. However, all technical information is approximate and may vary upon application. Additional suspension components may be needed in some applications, depending upon the make, model, engine and chassis of the vehicle. Hotchkis Performance is not responsible for any consequences resulting from manufacturer's technical mid-year changes. Hotchkis Performance products should only be installed by a qualified, licensed auto mechanic experienced in the installation of such products.

#### Warranty Claim Procedure:

The answer to ALL the following questions should be YES before making a warranty claim:

- Did you register the product at [www.hotchkis.net](http://www.hotchkis.net) or via the mail-in warranty card within 30 days of purchase?
- Is the product appropriate to your application?
- Did you carefully and thoroughly read the instructions provided along with the product?
- Do you have the original invoice or sales receipt?
- Is the return date within 36 months from the purchase date?
- Are you the original purchaser?
- Was the product properly installed by a qualified, licensed auto mechanic?
- Has the product been installed on the original vehicle on which it was installed at all times?
- Is the product unmodified and clean?
- Is the reason for return a legitimate product defect?

If the answer to all these questions is YES, please contact our Customer Service Department at (562) 907-7757. You will be given a Returned Goods Authorization Number (RGA) valid for 60 days. You will also be asked to ship the product prepaid to our facility. All shipments MUST be (i) prepaid, (ii) include the original invoice or sales receipt, (iii) show the RGA on the outside of the package and (iv) include your name, address, make and model of the vehicle, and a brief description of the claimed defect, including the circumstances under which the defect occurred. If the warranty claim is deemed valid then Hotchkis will estimate shipping costs to return the repaired or replacement part and contact you for payment. Hotchkis's Limited warranty requires that any repaired or replaced product will be returned to the sender excluding the cost of freight. Warranty related inquiries should be sent to the following address:

HOTCHKIS PERFORMANCE, LLC  
C/O CUSTOMER SERVICE  
8633 Sorensen Avenue  
SANTA FE SPRINGS, CA 90670

Hotchkis Performance will not accept product returns without the RGA number, receipt and the information described above. C.O.D. or collect shipments will be refused. Once the returns are received at Hotchkis Performance, we will evaluate the products, verify the sales receipt, and investigate the warranty claim. Any repaired or replaced product will be returned to the sender.

Effective December 1, 2010. This return policy and limited warranty supersedes all previous policy and warranty statements. Policies and warranties are subject to change without notice. Hotchkis Performance is not responsible for printing errors.